

Wonderful Water



STARTER



When you visited The Alnwick Garden, you will have seen some water features. Look at the map and point out where the water features are.



THE ALNWICK GARDEN

1. The Ornemental Garden
 2. The Grand Cascade
 3. The Serpent Garden
 4. The Rose Garden
 5. The Bamboo Labyrinth
 6. The Forgotten Garden Adventure Golf
 7. The Pinery Gift Shop and Plant Centre
 8. The Pavillion
 9. The Poison Garden
 10. The Treehouse and The Potting Shed
 11. Pond
 12. The Cherry Orchard
 13. To The Town
 14. Roots and Shoots Allotment
 15. To Alnwick Castle
 16. The Bakery
 17. Pick Up and Drop Off Point
 18. Accessible Parking
 19. Main Car Park
 20. Ticket Sales
 21. The Apiary
- P** Parking
WC Toilet
 Disabled Toilet



- Scooter / Wheelchair / Pushchair Accessibility**
- Red: Avoid Area
 - Yellow: Caution Area
 - Purple: Safe Route

How many did you find?



The Alnwick Garden Water Features



The Grand Cascade



The Pond



The Serpent Garden



The Ornamental Garden



LO: I can identify key vocabulary associated with The Water Cycle.

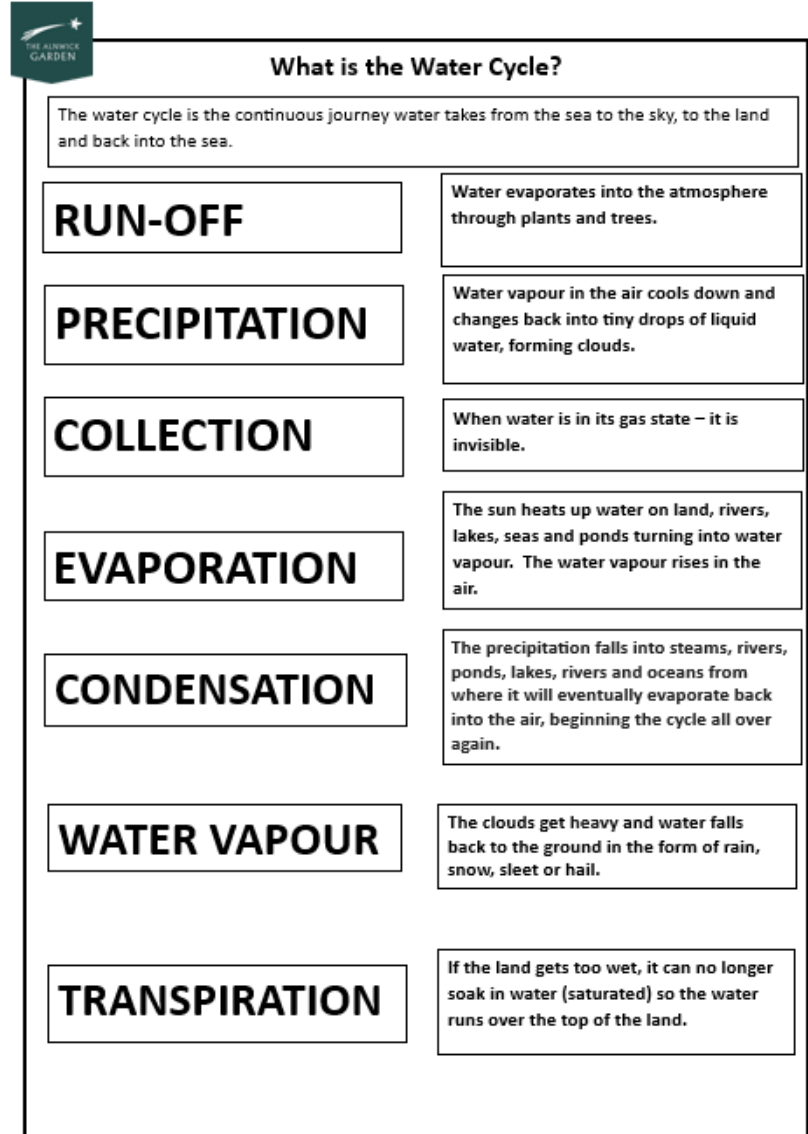
Where does the water come from that is in The Alnwick Garden and everywhere?

- Watch the video about the water cycle.
 - <https://www.youtube.com/watch?v=xrYiH0vTXHQ>er cycle.
- Water Cycle Song
 - <https://www.youtube.com/watch?v=gBbFxl6Oy94>
- Complete the definition activity.



What is the Water Cycle?

- Read the Water Cycle Sheet.
- Match the key term to the definition by drawing a line to connect them.

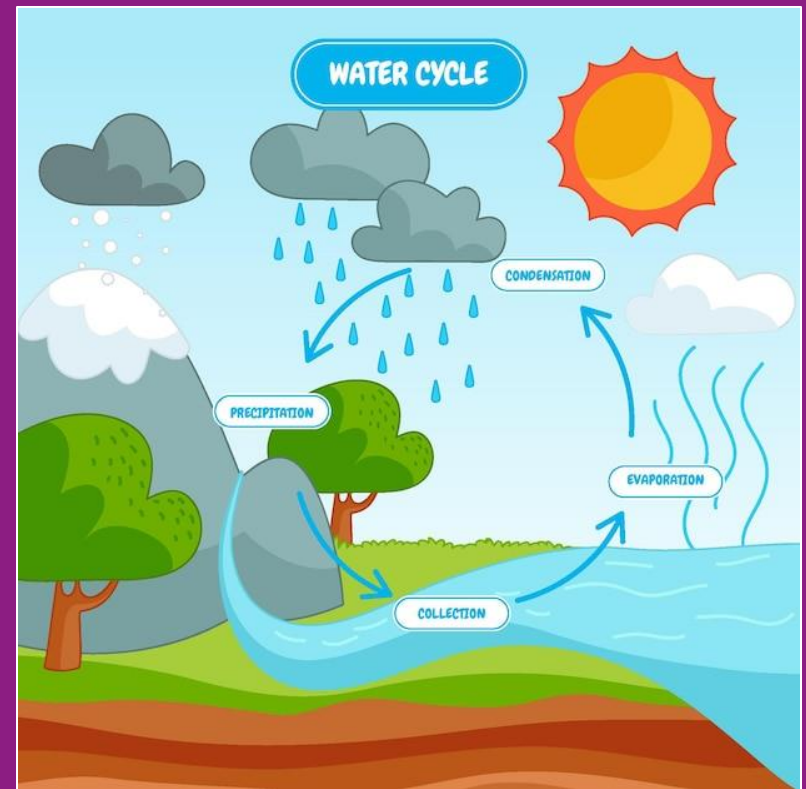


What is the Water Cycle?

The water cycle is the continuous journey water takes from the sea to the sky, to the land and back into the sea.

RUN-OFF	Water evaporates into the atmosphere through plants and trees.
PRECIPITATION	Water vapour in the air cools down and changes back into tiny drops of liquid water, forming clouds.
COLLECTION	When water is in its gas state – it is invisible.
EVAPORATION	The sun heats up water on land, rivers, lakes, seas and ponds turning into water vapour. The water vapour rises in the air.
CONDENSATION	The precipitation falls into streams, rivers, ponds, lakes, rivers and oceans from where it will eventually evaporate back into the air, beginning the cycle all over again.
WATER VAPOUR	The clouds get heavy and water falls back to the ground in the form of rain, snow, sleet or hail.
TRANSPIRATION	If the land gets too wet, it can no longer soak in water (saturated) so the water runs over the top of the land.

LO: I can label and explain a diagram illustrating The Water Cycle.



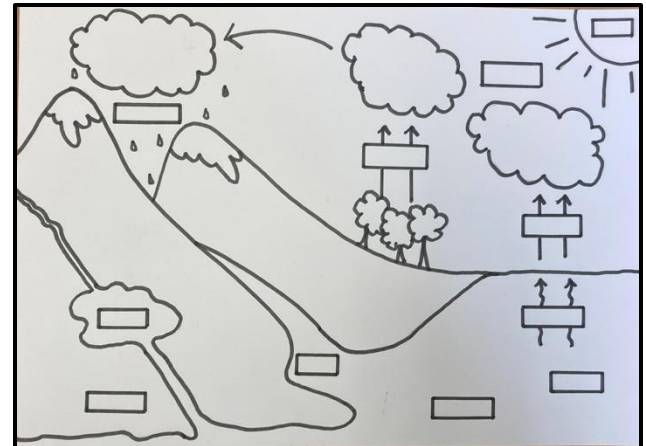
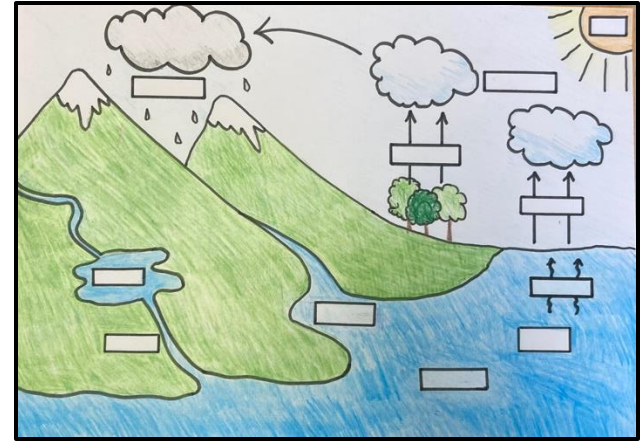
Water Cycle Diagram

- Watch the water cycle video again to reinforce your learning -
<https://www.youtube.com/watch?v=xrYiH0vTXHQer>
cycle.
- Collect a Water Cycle diagram.
- Using the key words on your definition sheet – enter the words into the correct boxes on your diagram.
- Check your answers with your partner.
- Do you both have the same?
- Can you describe to your partner what is happening at each stage without any prompts?

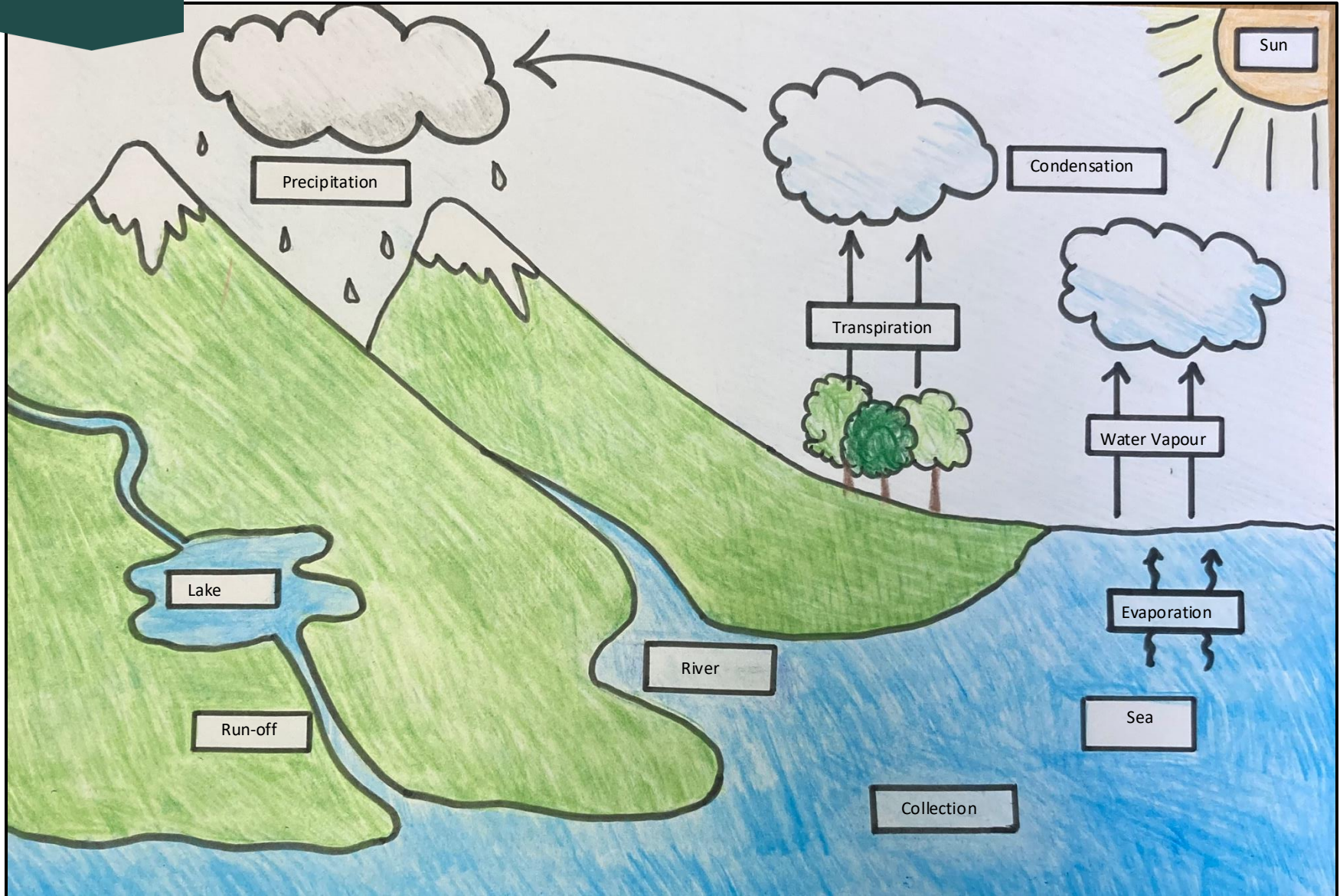
Water Cycle Diagram

Key Words:

- Lake
- Precipitation
- River
- Water Vapour
- Sea
- Sun
- Condensation
- River
- Evaporation
- Collection
- Run-off



Water Cycle Diagram Answers



**LO: I can describe
the journey of a
water droplet in
The Water Cycle.**



Water Droplet Storyboard





- You are a water droplet in the sea about to start your journey on the water cycle.
- Describe your journey through the cycle as you leave and then return to the sea to start your journey again.
- Write this as a Storyboard.
- Your teacher will give you your Storyboard template.





Water Droplet Storyboard





 **The Water Droplet Storyboard** 

1.	2.	3.	4.
5.	6.	7.	

 **The Water Droplet Storyboard** 

1.	2.	3.
4.	5.	5.

 **The Water Droplet Storyboard** 

1.	2.
3.	4.

LO: I can conduct an investigation to demonstrate the processes involved in The Water Cycle.



Water Cycle Investigation

- Create a landscape in the large plastic container - mould the soil to make hills and dig out a lake basin in the middle.
- Place the small plastic container where you have created the lake basin.
- Fill the container with water to represent the lake.
- Cover the large plastic container with cling film and secure it with tape or an elastic band. The cling film represents the sky.
- Leave the container in a sunny place and observe over the next few days.
- You are going to record your findings each day – you could take photographs as evidence.

LO: I can write-up my Water Cycle Investigation.



Water Cycle Investigation

Day 1



Day 4



Water Cycle Investigation

Day 7



Day 10



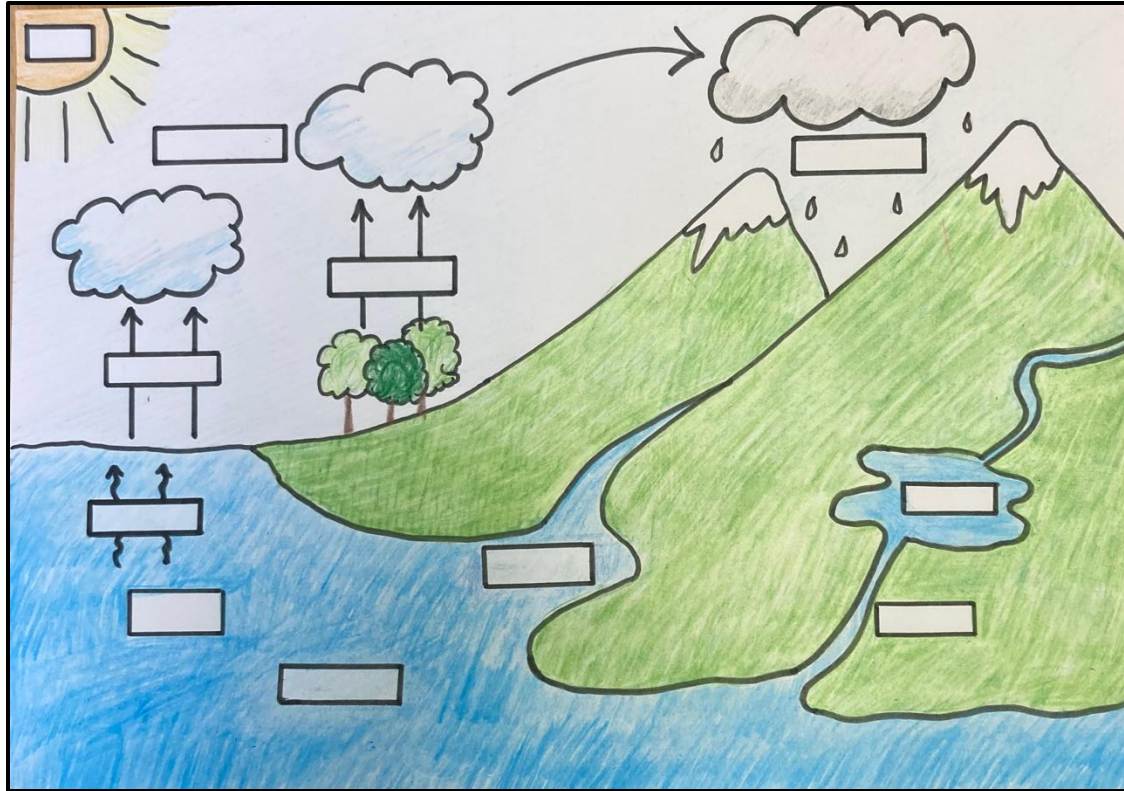
Water Cycle Investigation Write Up

- You are now going to write-up your Water Cycle Investigation.
- You will have been given a writing frame to use by your teacher.
- Remember to use the new vocabulary you have been introduced to when learning about the water cycle.
- Use your completed activity sheets and information recorded to help you.

**LO: I can complete a
quiz about the
water cycle.**

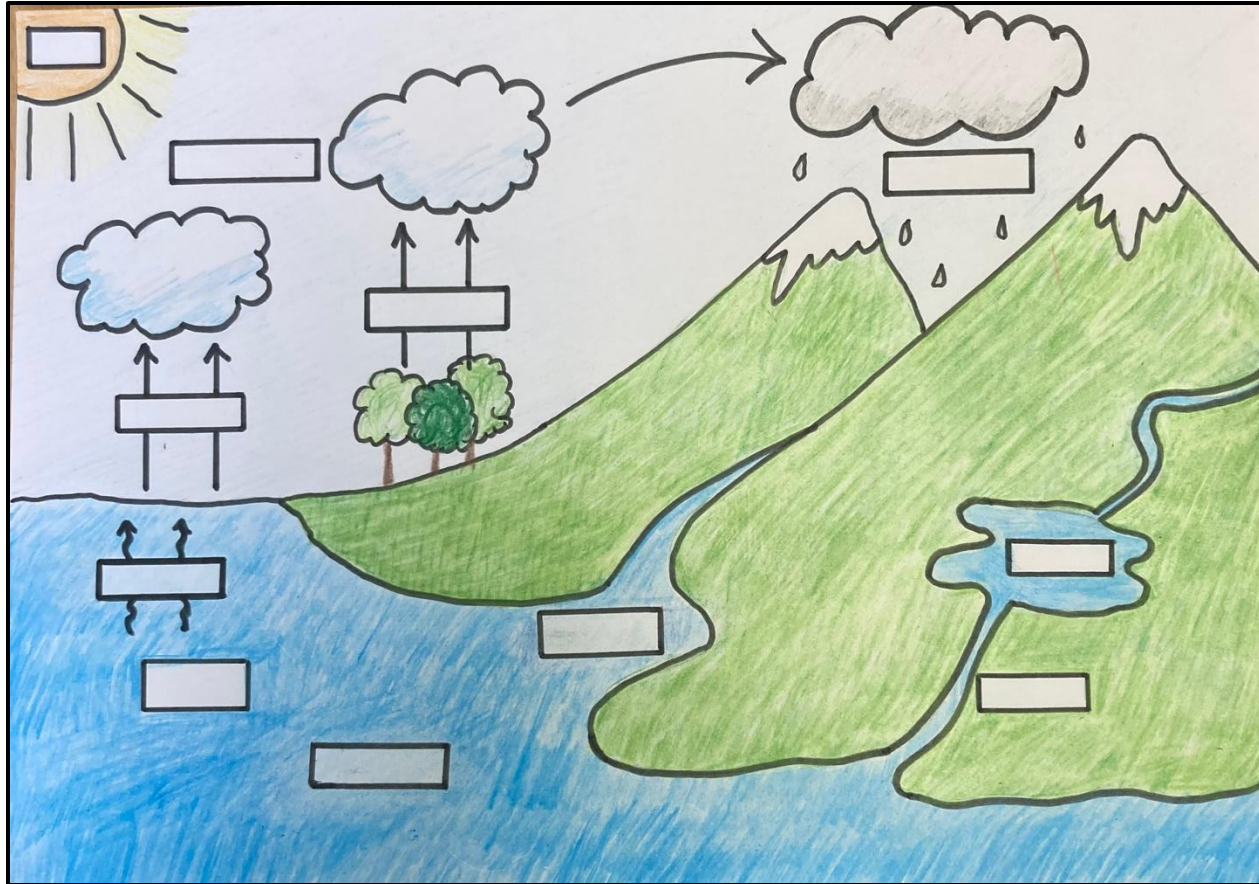


True or False



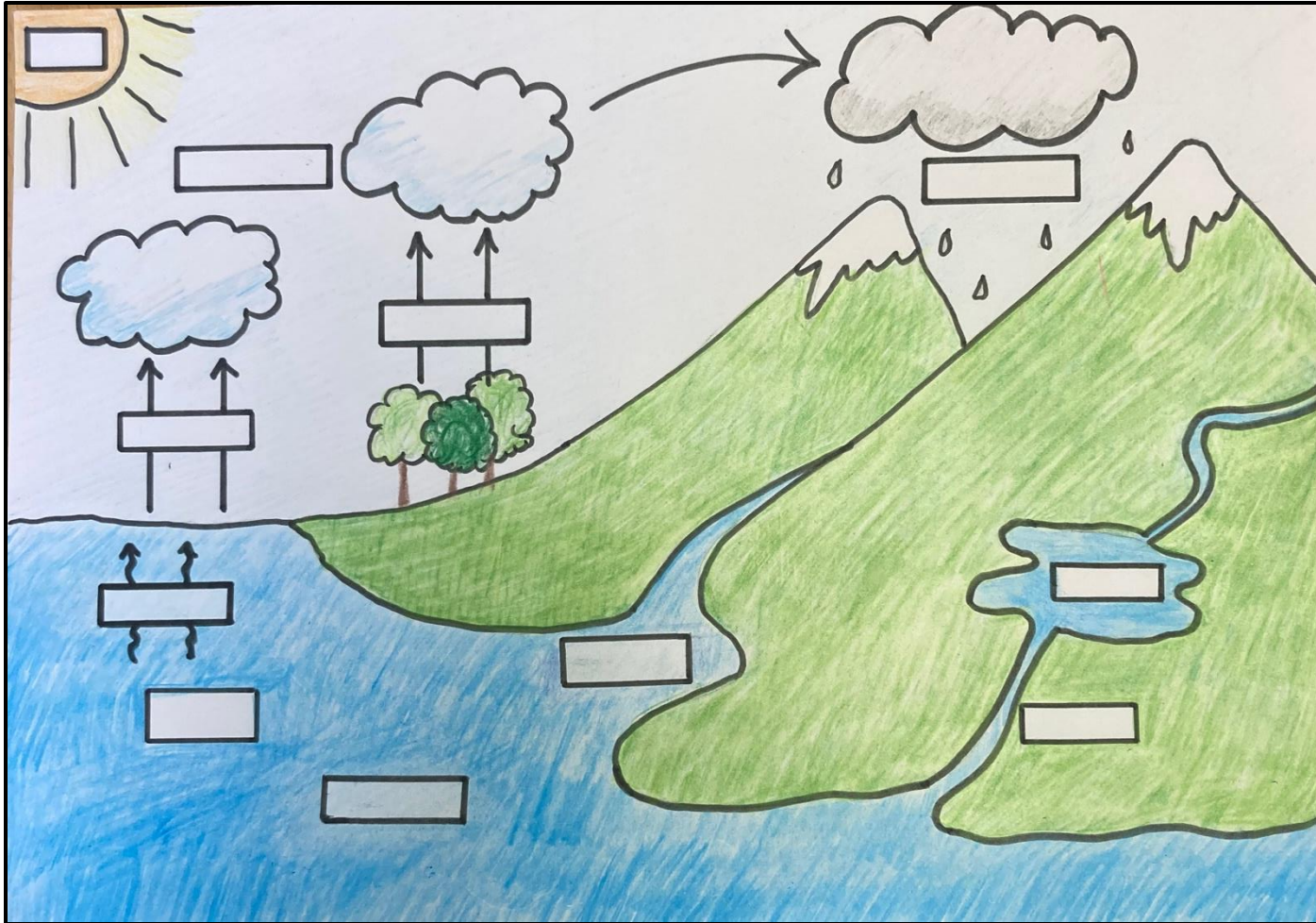
The wind blows the clouds over land and the clouds drop their water as rain, sleet, hail or snow.

True or False



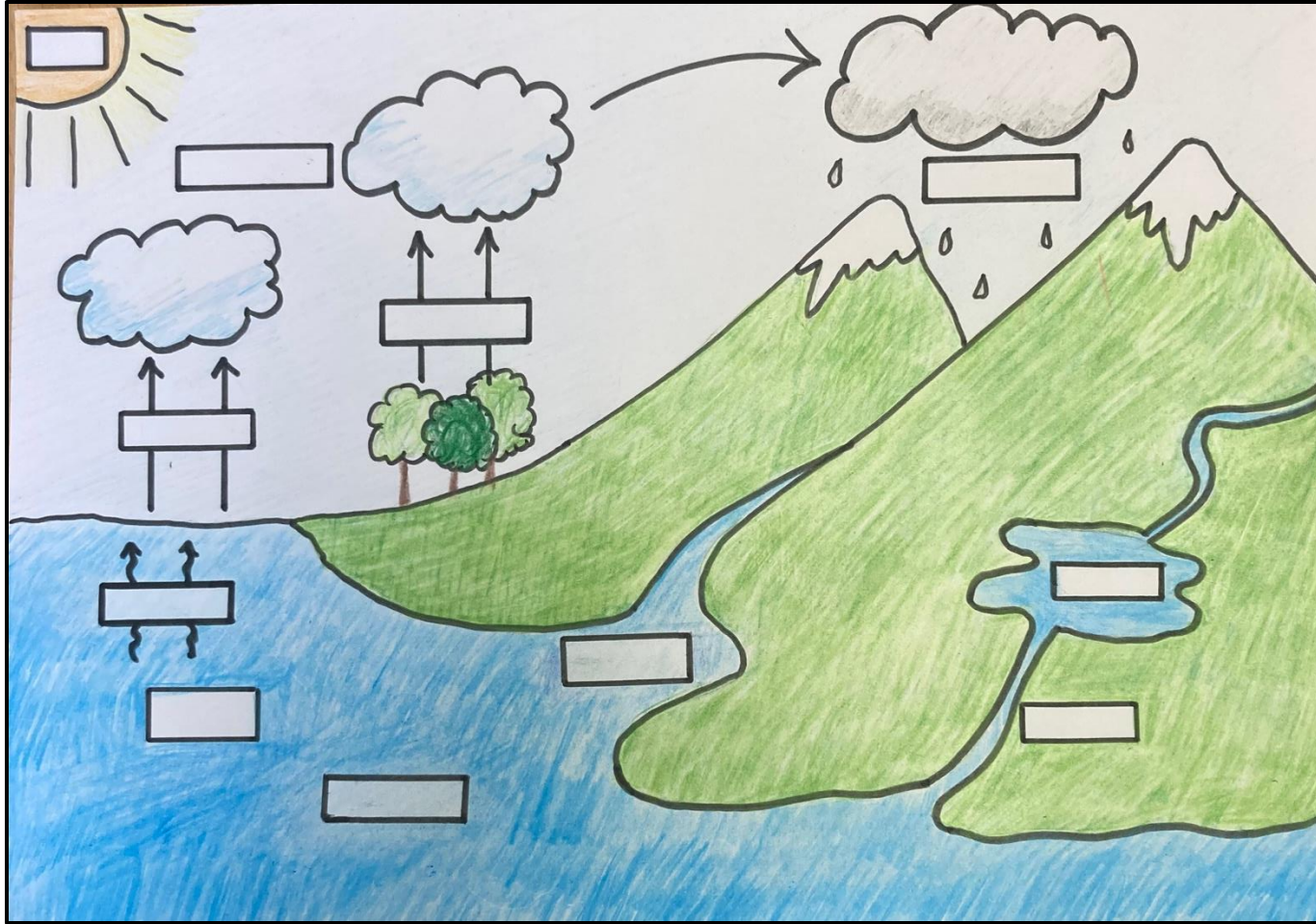
When water evaporates from plants and trees it is known as perspiration.

True or False



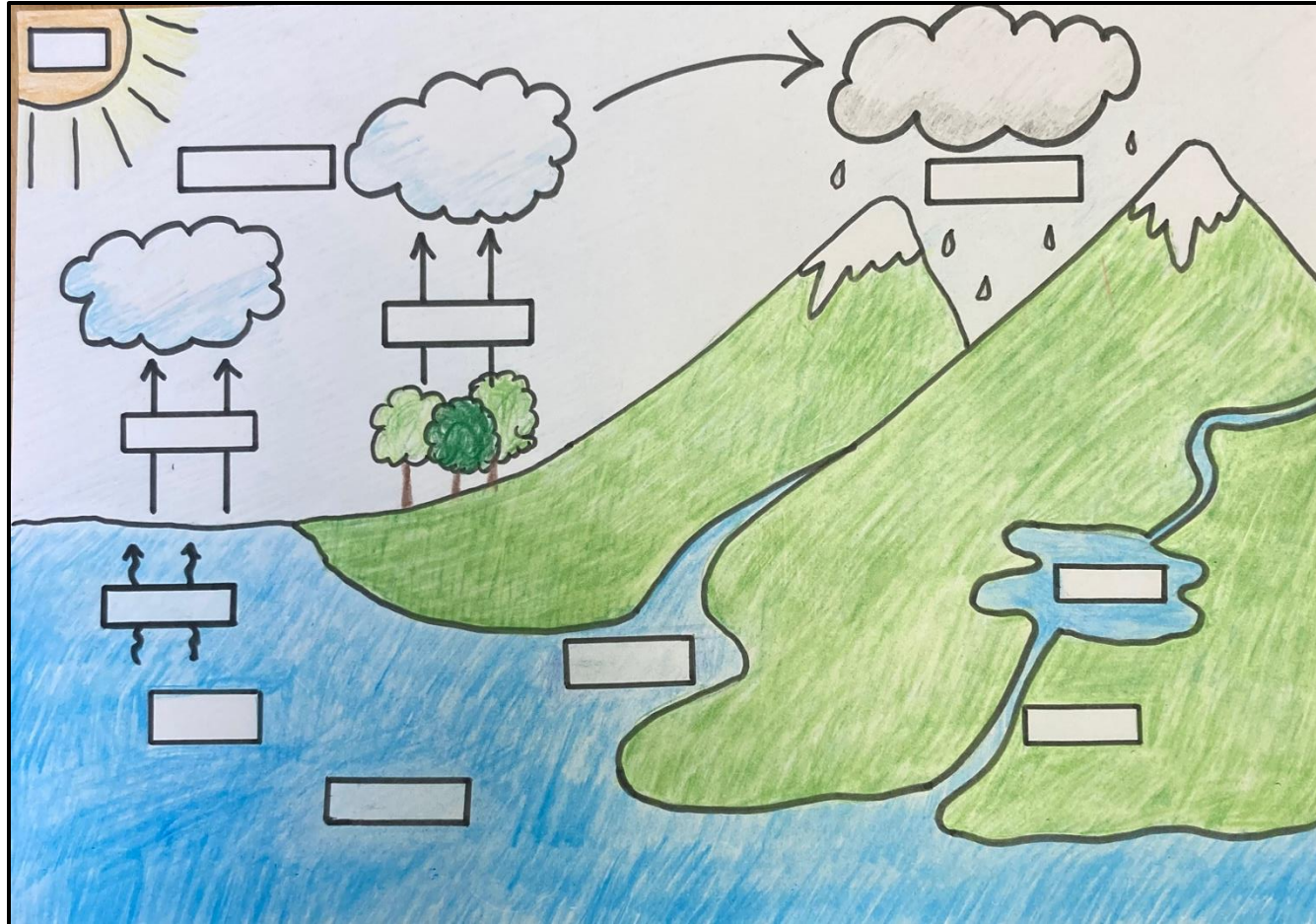
Condensation creates rain.

True or False



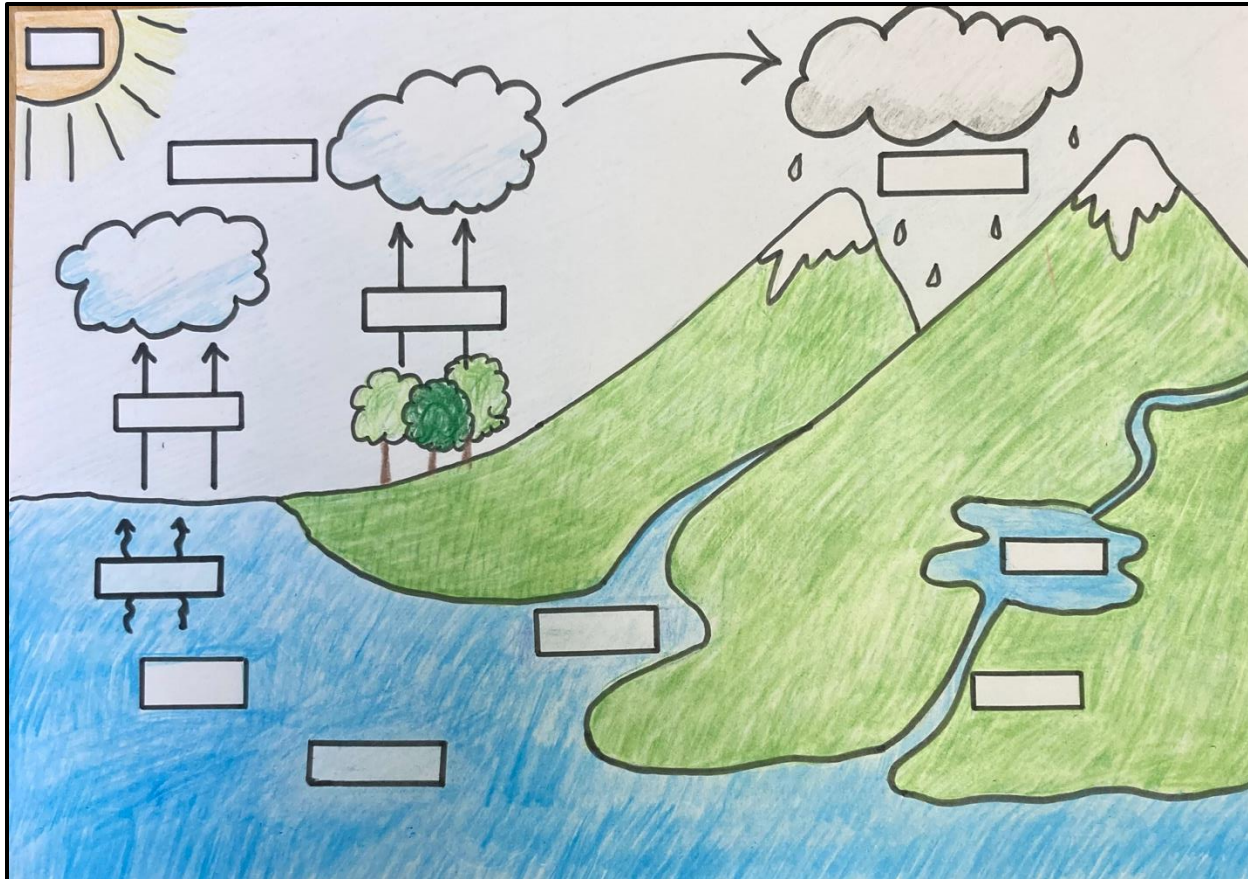
Evaporation creates water vapour.

True or False



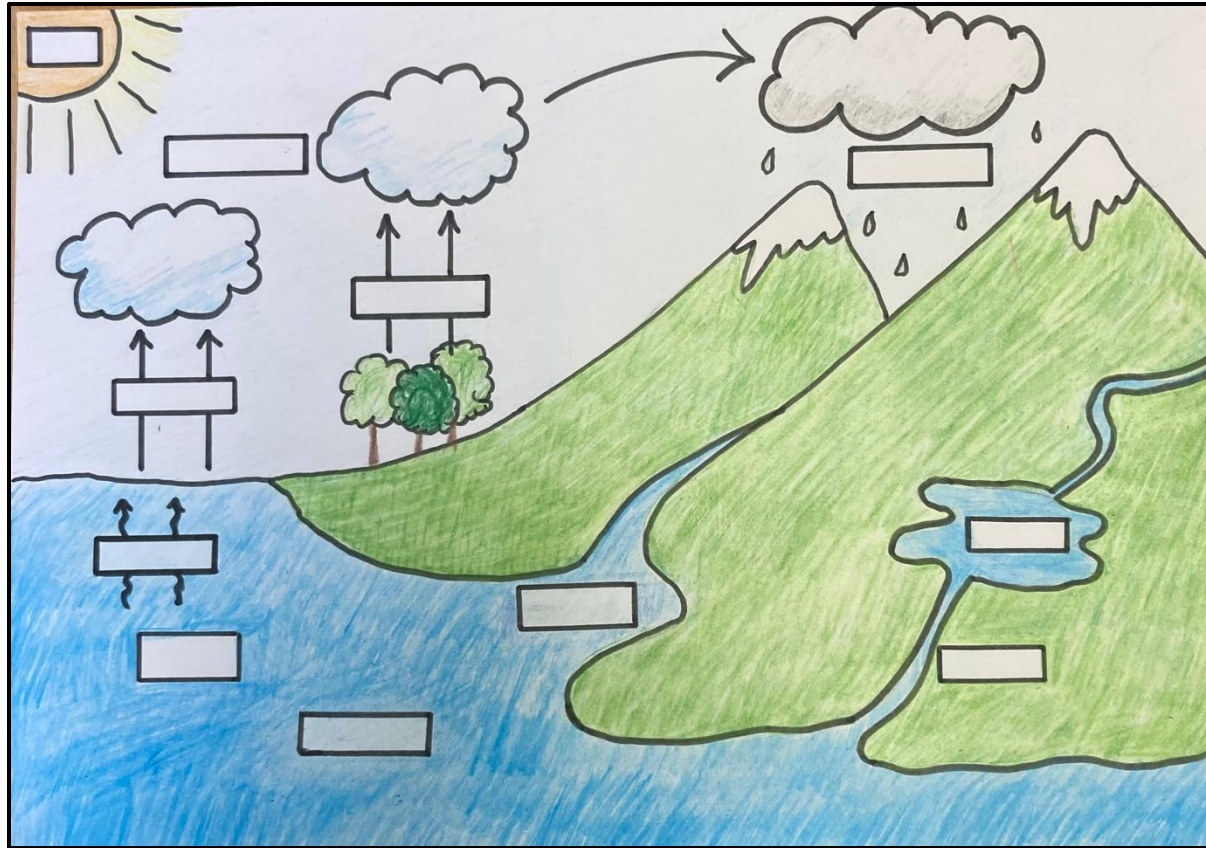
Run-off is the excess water that runs back into rivers and lakes.

True or False



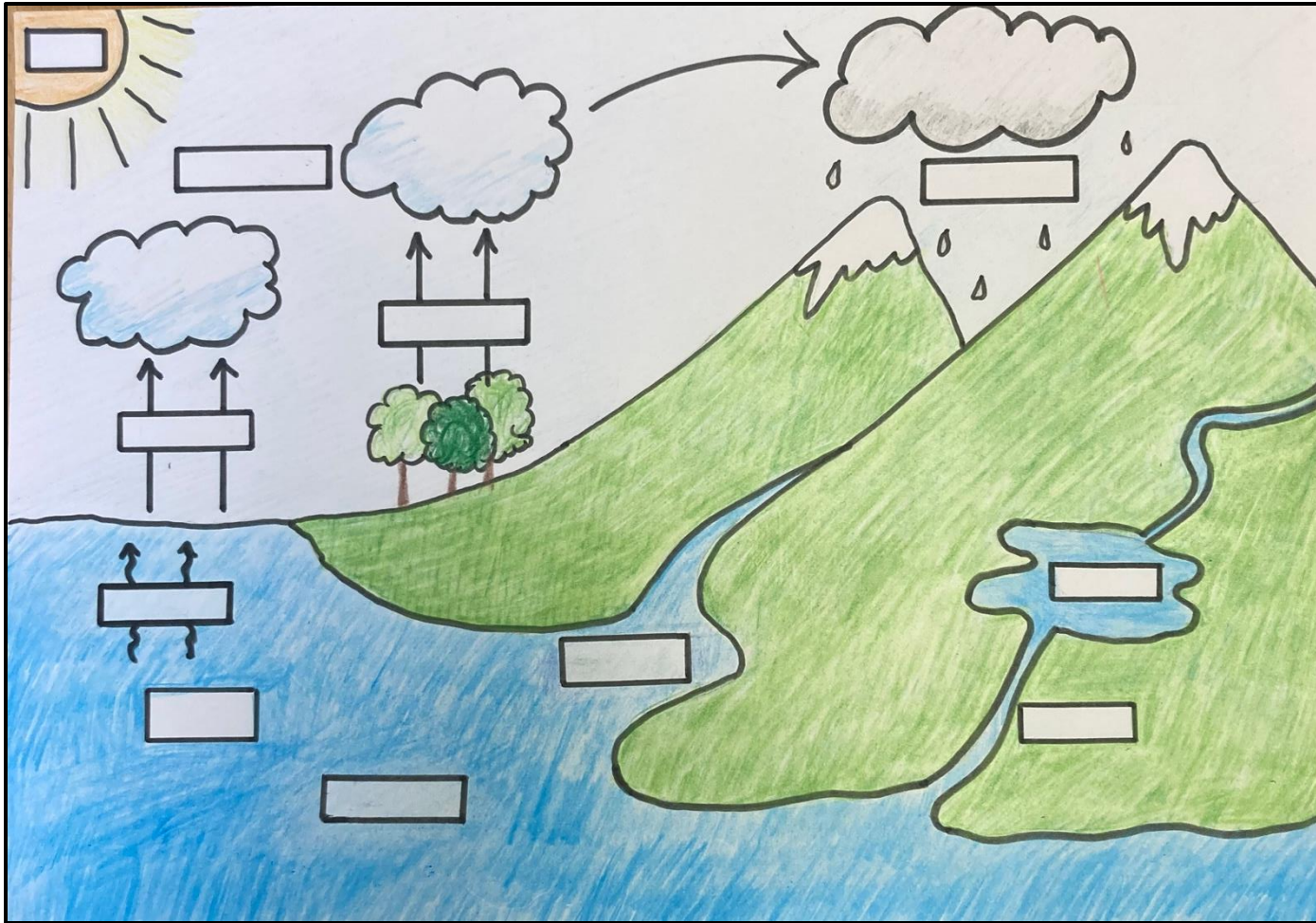
When heat from the sun heats up the sea, it turns the water into vapour.

True or False



When the water runs into the lakes, rivers, streams, sea or oceans this this know as accumulation.

True or False



The water cycle never stops.