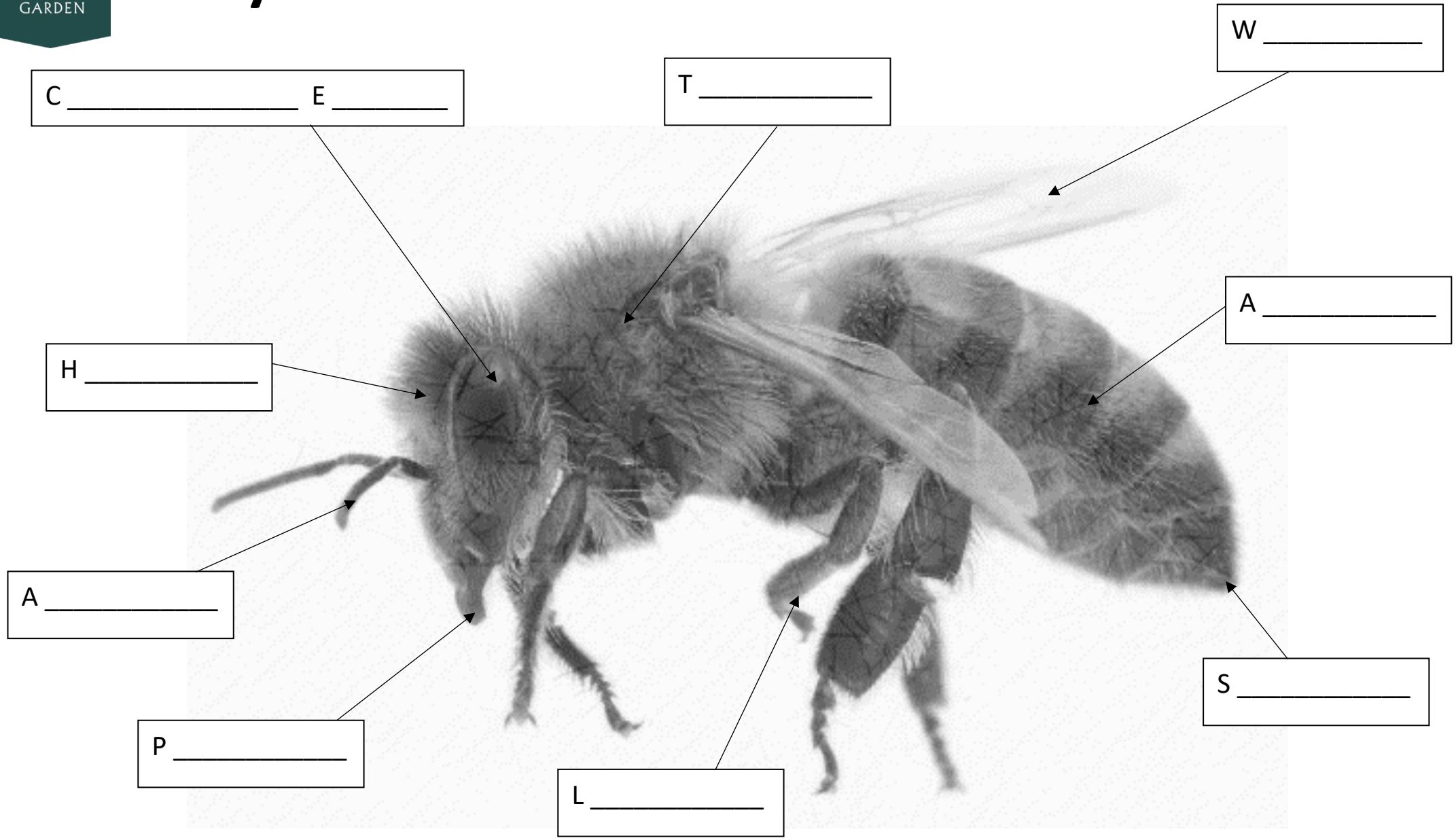




# Science

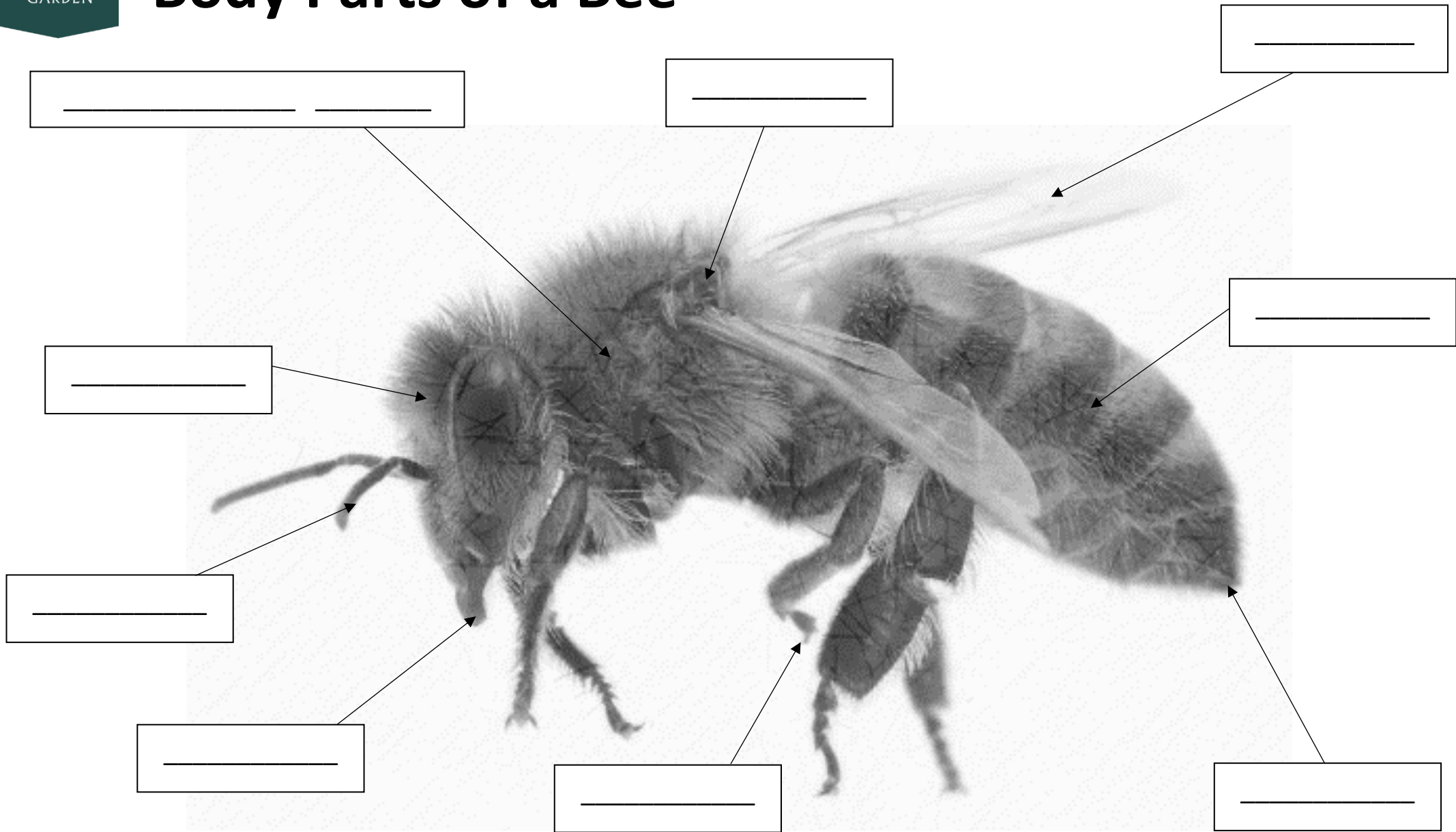
## Buzzing Bees

# Body Parts of a Bee



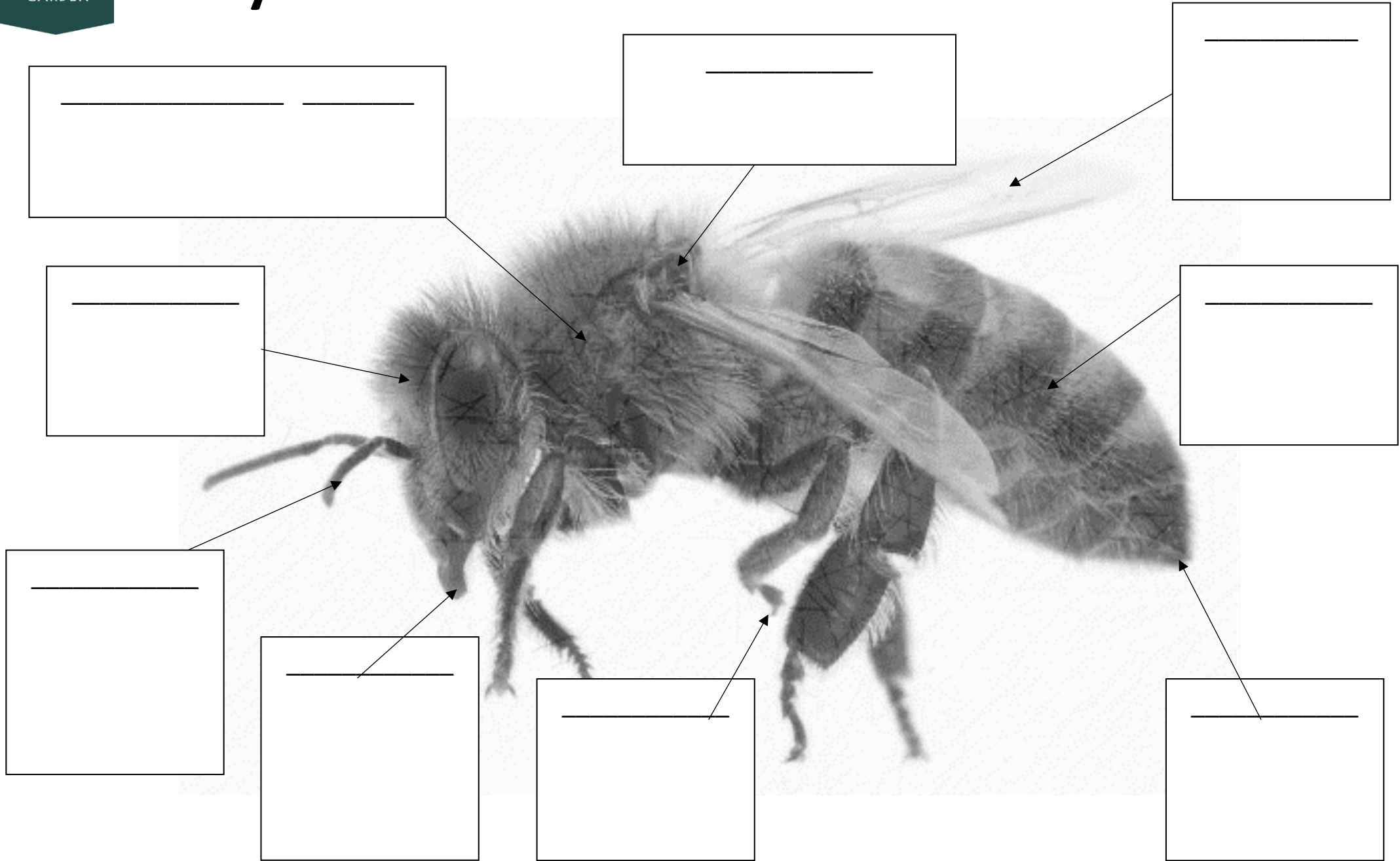
Compound Eye	Antenna	Leg	Proboscis	Thorax	Wing	Head	Stinger	Abdomen
--------------	---------	-----	-----------	--------	------	------	---------	---------

# Body Parts of a Bee



- |              |         |     |           |        |      |      |         |         |
|--------------|---------|-----|-----------|--------|------|------|---------|---------|
| Compound Eye | Antenna | Leg | Proboscis | Thorax | Wing | Head | Stinger | Abdomen |
|--------------|---------|-----|-----------|--------|------|------|---------|---------|

# Body Parts of a Bee





# TO BEE OR NOT TO BEE

## BREAKFAST

## LUNCH

## DINNER

# BUMBLEBEE, HONEYBEE OR BOTH

They have 6 legs.
They are great at gathering and transporting pollen.
They have over 250 species in the UK
They do not see the same colour as humans.
They live in a very large colony.
They mostly live in hives.
They have 5 eyes.
They have different lengths of tongue to feed on different types of flowers.
They have only one species in the UK.
They eat pollen and nectar from a flower.
They make a small amount of honey.
They have yellow and black stripes
They live in small colony.
Their body has three parts – head, thorax and abdomen.
They live in the wild (gardens and countryside).
Pollen from a flower sticks to their furry body.
They can only sting once.
They have smelly feet.
They are round and furry.
They are mainly looked after by bee keepers.
They usually live underground.
They make lots of honey.
They have a tongue called a proboscis.
They break down their communities into three distinct groups: queens, drones and workers.
They are small and slim (they look like a wasp)
They have two antennae
They can sting more than once.



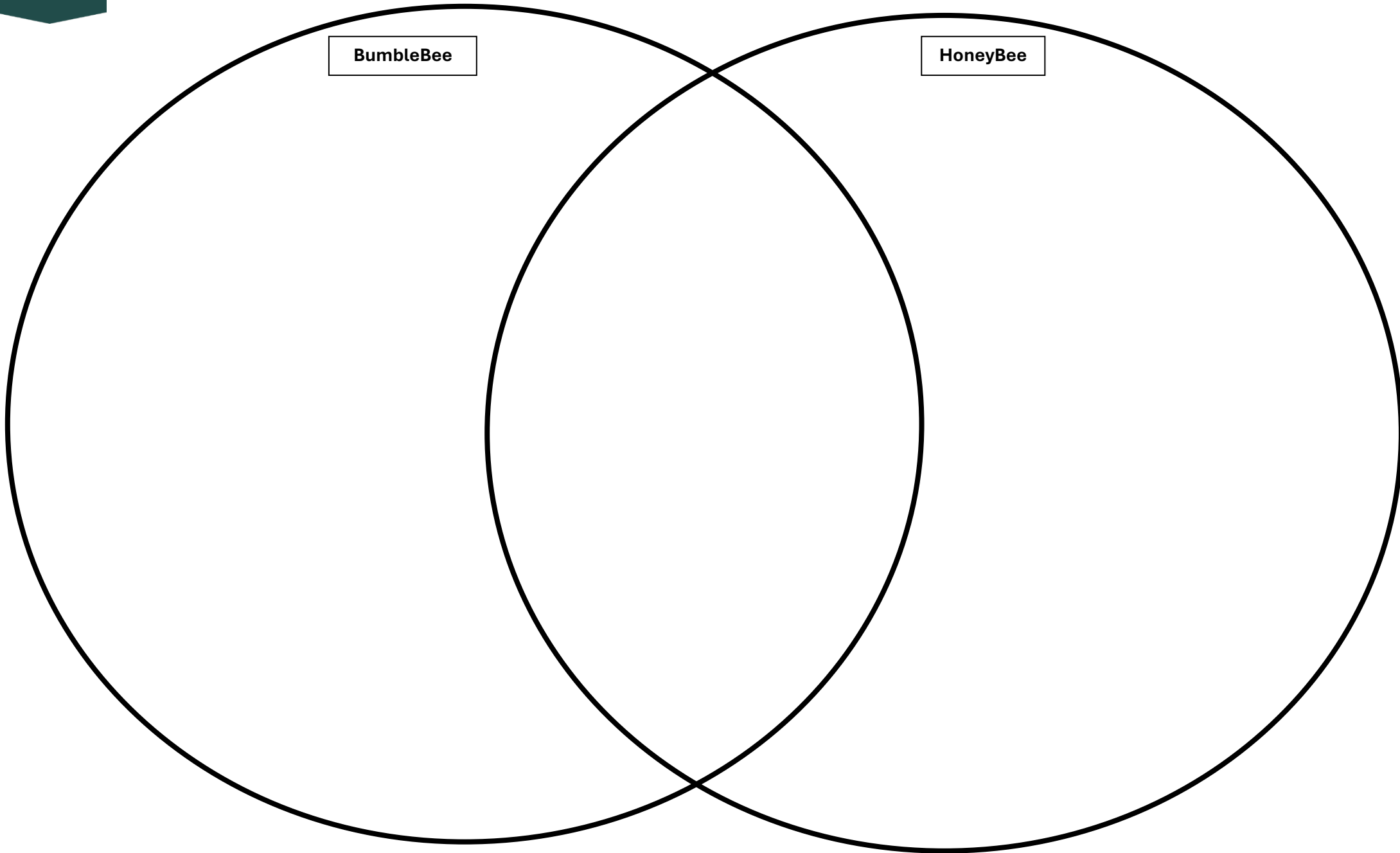
# BUMBLEBEE, HONEYBEE OR BOTH

## Answers

They have 6 legs.	B
They are great at gathering and transporting pollen.	B
They have over 250 species in the UK	BB
They do not see the same colour as humans.	B
They live in a very large colony.	HB
They mostly live in hives.	HB
They have 5 eyes.	B
They have different lengths of tongue to feed on different types of flowers.	BB
They have only one species in the UK.	HB
They eat pollen and nectar from a flower.	B
They make a small amount of honey.	BB
They have yellow and black stripes	B
They live in small colony.	BB
Their body has three parts – head, thorax and abdomen.	B
They live in the wild (gardens and countryside).	BB
Pollen from a flower sticks to their furry body.	B
They can only sting once.	HB
They have smelly feet.	B
They are round and furry.	BB
They are mainly looked after by bee keepers.	HB
They usually live underground.	BB
They make lots of honey.	HB
They have a tongue called a proboscis.	B
They break down their communities into three distinct groups: queens, drones and workers.	B
They are small and slim (they look like a wasp)	HB
They have two antennae	B
They can sting more than once.	BB



# BUMBLEBEE, HONEYBEE OR BOTH



BumbleBee

HoneyBee

# MY BEE MODEL

- **Decide on your materials.**
- **Draw your bee model.**
- **Label your model – try to include as much of the bees body parts as possible.**
- **Can you justify why you have used certain materials for certain body parts?**

# Decline of Bees News Broadcast Planning Board



1.	2.	3.	4.
5.	6.	7.	8.

# Decline of Bees News Broadcast Planning Board



1.	2.	3.
4.	5.	5.



# Decline of Bees News Broadcast Planning Board



1.	2.
3.	4.